

## SPECIAL EVENTS

### Hallelujah: The Bible and Handel's *Messiah*

Wednesday nights during Lent

Leaders: Doris Mabrey and Marty Orth

Welcome to a wonderful way into the Bible. Handel's oratorio, *Messiah*, is one of the best-loved musical compositions of all time. This six-session study will use *Messiah* as an avenue into the Biblical texts on which it is based. The study will deepen our appreciation and understanding of the words and the music of Handel's *Messiah*. It is a Bible study, so will focus on the Bible – but we will get to hear Handel's wonderful music. We will hear and study Parts II and III of *Messiah*. Part II reflects on the suffering, death, and resurrection of Jesus Christ; Part III anticipates the redemption of the world through faith.

### The Reformed Approach to Moral Decisions

February, March and April

Leader: Dr. Bruce Douglass

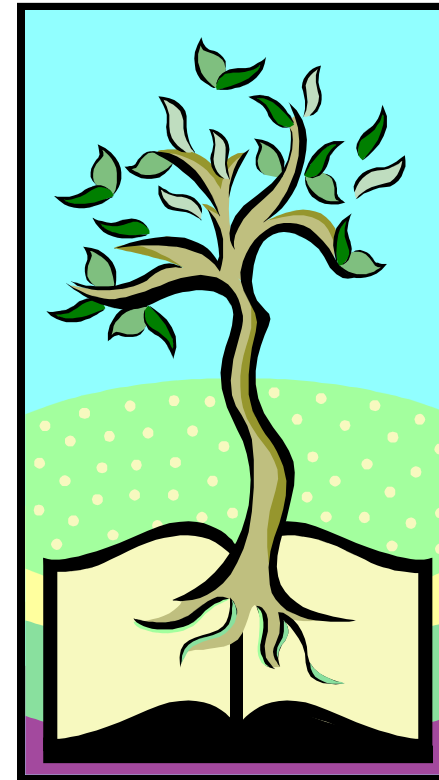
How does our faith prepare us for moral decision-making? What can we learn from our Reformed Tradition as we face difficult political and personal situations – in other words, what is our approach to Biblical interpretation? Please consider joining us for an excellent series of 3 2-hour classes, meeting once a month on Sunday afternoons (exact dates TBD) through the months of February, March and April. We'll read material and discuss a single theme with real world applications – the ethics of violence as confronted in a variety of settings (such as war, capital punishment, euthanasia, abortion, etc.).

The class will be taught by Dr. Bruce Douglass. Bruce is Director of the Reformed Institute of Metropolitan Washington and Associate Professor, Department of Government, Georgetown University. He is a graduate of Yale University (PhD in political science) and Duke University. He is an Elder at Lewinsville Presbyterian Church in McLean, VA.



Inviting the World  
Empowering the People  
Embodying God's Grace

## Adult Spiritual Growth 2009-2010



### Education Opportunities

*"For once you were in darkness, but now in the Lord you are in light. Live as children of light - for the fruit of the light is found in all that is good and right and true." - Ephesians 5: 8-9*

For more information about the Adult Spiritual Growth Team in general, please contact:

Sara DeWitt  
Team Leader  
(703) 836-2951  
sarabeth@gmail.com

First Presbyterian Church  
601 N. Vermont Street. Arlington, VA 22203  
Ph. (703) 527-4766 Fax (703) 527-2262  
Email: fp.church@verizon.net  
Web: www.fpcarlington.org

## NEW SMALL GROUPS FORMING THIS FALL

### Quarterlife small group: Finding Sabbath

(for 20-somethings)

Leaders: Peter and Ann-Bailey Lipsett

The Quarterlife group is starting a new small group to explore the theme of Sabbath: How do we make time for God in a non-stop, busy life? Join us for an organizational session on Sunday, Sept. 20 after the 11:00 AM service. Contact Peter at [peter@lipsett.com](mailto:peter@lipsett.com) for more information.

### Crossroads small group: Book Study

(for those 30+)

Leader: Miles Townes

Join us for an ongoing discussion of Rob Bell's intriguing (and unusual) book: *Velvet Elvis; Repainting the Christian Faith*. The group meets every other week for dinner and discussion. Contact Miles at [mdtownes@gwmail.gwu.edu](mailto:mdtownes@gwmail.gwu.edu) for more information.

### Men's Book Study

It would be great to hear from men in the church who would be interested in forming and participating in a book club. The suggested model would be to share leadership in discussing a few chapters from the selected book (e.g., "The Bible" by Karen Armstrong and "The Language of God" by Francis Collins (nominee to head NIH) each week. Please respond to Bill Freeborne ([wfreeborne@aol.com](mailto:wfreeborne@aol.com); (703) 888-2128 as to your interest and available times to participate.

### Church Ladies Book Club

This group gathers once a month for a light pot luck meal and to discuss a book chosen by one of the group. Past reads have included: *Eat, Pray, Love; The Glass Castle* and *Crossing Myself*. The reading list for the rest of the year, meeting dates and other information about the group can be found at <http://groups.google.com/group/fpclbc>.

### Spiritual Formation or Spiritual Practices Group

A new group can be formed with six people who are interested in a safe place to learn about, try out and discuss new (or old!) practices that deepen our sense of the holy, give us joy and strengthen us in compassion, generosity and justice making. Open to the idea? Wonder what we might do? Ready to begin? Contact Charlotte Lohrenz at [pcusalohrenz@netscape.net](mailto:pcusalohrenz@netscape.net)

# SUNDAY MORNINGS THIS FALL

---

in Room 103

## **Growth: What's God Got to Do With It**

September 20

The Joys and Challenges of Moving from a Pastoral to Program Size Congregation

Leader: Interim Pastor Charlotte Lohrenz

Session has affirmed a calling for First Presbyterian to grow - in spirit, faithfulness, outreach and membership - and the Pastor Nominating Committee is searching for the right candidate to inspire and manage that growth. This hour will be an opportunity to review the terminology used to discuss congregational size, the hallmarks of various sizes, including the leadership design and pastoral needs of various sizes. We will focus on the opportunities and challenges of moving from the "awkwardness" of FPC's current size, which straddles two system styles into a healthy program size church.

## **The Gospel that Stings: Jesus' Parables According to Luke**

September 27 - October 18

Leader: Rev. Dr. John Yieh

Back by popular demand after his very popular class last spring, we have invited the Rev. Dr. John Yieh back to FPC for another 4-week session. Join us for serious study of Jesus' parables as recounted in the Third Gospel: Luke. John is an ordained Presbyterian Minister of Word and Sacrament. He graduated from Yale Divinity School and teaches New Testament at the Virginia Theological Seminary.

## **Planning and Designing Worship for Outreach**

October 25

Leader: Interim Pastor Charlotte Lohrenz

FPC has made a commitment to welcome people who are not part of a church community. How does the church design a new worship service that will appeal to new worshippers and serve God? We will overview the process including: deciding who the church is called to minister to and with, deciding what their needs are and how they will worship, and making plans to begin a service with enough members of the current congregation to provide a welcome. This is a glimpse of the process FPC is expected to undertake with the next installed pastor.

## **Biblical Concepts of Stewardship**

November 1-22

Leader: Rev. Donna Weddle

Scripture is clear that people are to be "stewards" of the gifts that God has created. What does it mean to be a steward? And what are we to be taking care of? Is being a good steward a private concern? A community concern? Part of our public life? The series led by FPC clergy colleague and former military chaplain, Donna Weddle, will provide the opportunity to discuss biblical references, share questions and concerns and reflect on our individual response.

## **Prepare our Hearts: Advent and Art**

November 29-December 20

Leader: Elizabeth Jernigan

Advent is a time when we prepare ourselves for the coming of the Lord Jesus' birth, but meditative practice and quiet prayer can be very hard to find in the hubbub of Christmas time. Join us for quiet space, and an exploration of the themes of Advent through art.

# WEEKDAYS THIS FALL

---

## **A Study of the Book of Joshua**

2<sup>nd</sup> Thursday of every month

Women of the Church Circle

This year, the Women of the Church Circle will be holding a study of the book of Joshua. Each session begins at 12:30 PM for dessert, coffee, and good discussion. All women of the church are invited – please drop in!

# ANNUAL CHURCH RETREAT

---

## **Friday, October 9 – Sunday October 11**

Massanetta Springs Conference Center

Harrisonburg, VA

Leader: Johnathan Smoot, M.Div.Ph.D.

Mark your calendars now for the annual First Presbyterian Church retreat! This retreat will combine learning, faith, and fun at a retreat center nestled on 200 acres of woodlands and meadows. There will be activities for the whole family. It is a great opportunity to get to know others in the church.

This year's retreat is on the topic of what Calvin says to us today. Dr. Smoot is a teacher at the Reformed Institute of Metropolitan Washington and has served as a PC(USA) minister for the past 20 years. Most recently he was an interim pastor for the National Capital Presbytery at Bradley Hills Presbyterian Church, Bethesda, MD and Old Presbyterian Meeting House, Alexandria, VA. He has taught both young and mature adults on topics including biblical theology, Reformed theology/polity; contemporary and constructive theology; church history; ethics and contemporary issues. In addition, over his 20+ years in pastoral ministry he has led dozens of retreats and conferences. Dr. Smoot received his Ph.D. in systematic theology from King's College, University of Aberdeen in Scotland, UK.

# MARK YOUR CALENDARS!

---

A preview of ASG opportunities in winter/spring 2010

## **The Greening of the Bible: A Trail Guide for the Caring of Creation**

Sunday Mornings: January 3-24

Leader: Elder Louise G. Winfield, M.A. Religious Studies

This experienced adult education leader returns to FPC to teach on a topic of deep concern: our call to care for the global climate. Basis for study will be the *NRSV Green Bible Trail Guide*, augmented by new information and theology, including Sallie McFague's *A New Climate for Theology*. (2008) Topics include: the world as God's body; being connected to a sustainable earth; creation care as justice for all; and, where do we go from here?

## **Christians at the Border- Christian Perspectives on Immigration**

January 31-February 14

Sponsored by: The Mission Team  
Immigration Reform will most likely come up on the political agenda in 2010. Does being a Christian influence how we think about legal/illegal immigrants? Join us for a three-week class exploring immigration issues in the U.S.